



©COM-SDIS84

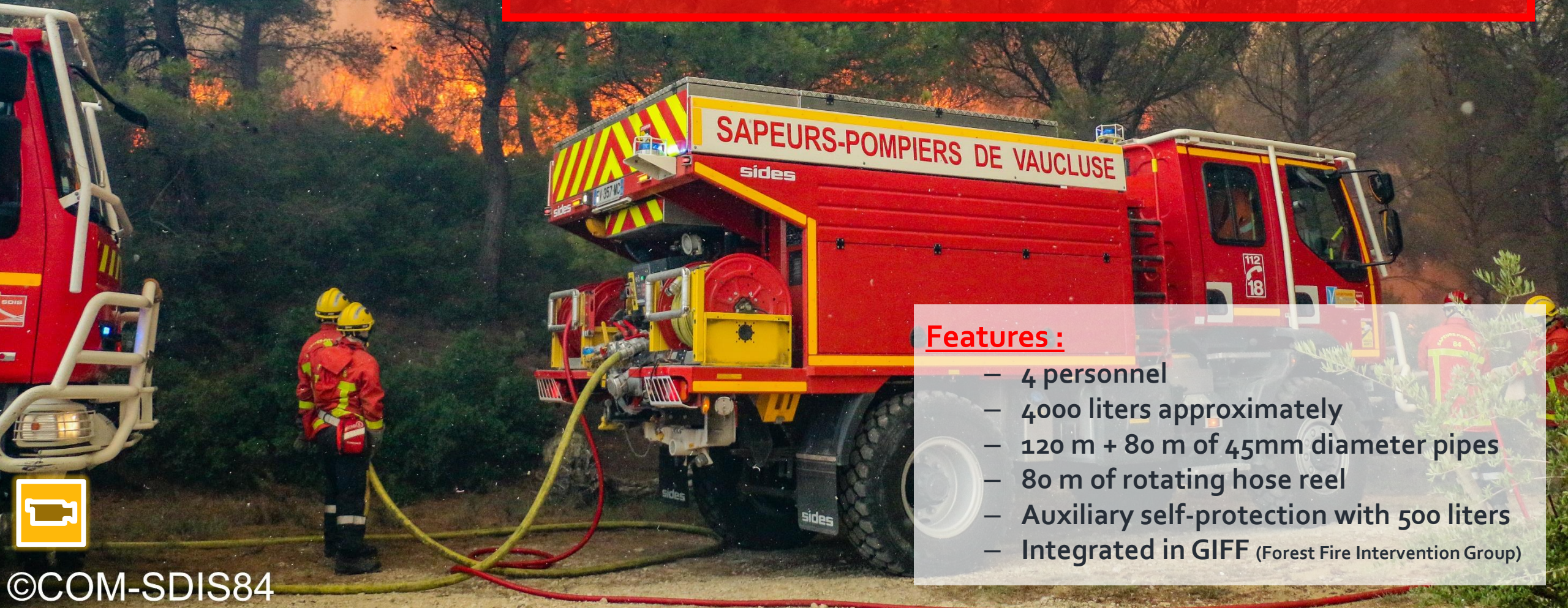


Land and air resources

Présentation accueil délégation étrangère

LE CCFM

Camion Citerne Feux Forêts Moyens Medium Forest Fire Tanker Truck



Features :

- 4 personnel
- 4000 liters approximately
- 120 m + 80 m of 45mm diameter pipes
- 80 m of rotating hose reel
- Auxiliary self-protection with 500 liters
- Integrated in GIFF (Forest Fire Intervention Group)



LE CCF 13000

Camion Citerne Feux Forêts 13 000 liters
Forest Fire Tanker Truck 13 000 liters



Features :

- 2 to 3 Personnel
- 13 000 liters approximately
- Self-protection
- Integrated in MIL(2CCF 13000 + 1 VLHR)



LE GIFF

Groupe Intervention Feux de Forêts Forest Fire Intervention Group



Features :

- 18 Personnel
- 1 VLHR with 4 CCFM
- Defensive & offensive maneuvers

INDIVIDUAL AND COLLECTIVE SAFETY



Type A Helmet

Conforms to the EN 16471 and EN 16473 standards with protective goggles



Hood and Gloves

Conforms to the NF EN 388, ISO 15383, NF EN ISO 13997 standards



Emergency Fallback Masks

Exclusively used to fallback and retreat in a safe space



INDIVIDUAL AND COLLECTIVE SAFETY



Nozzle allowing thermal self-protection of the vehicle

Laminated glass windows or secure windows

Branch hunting

Handles framed in white



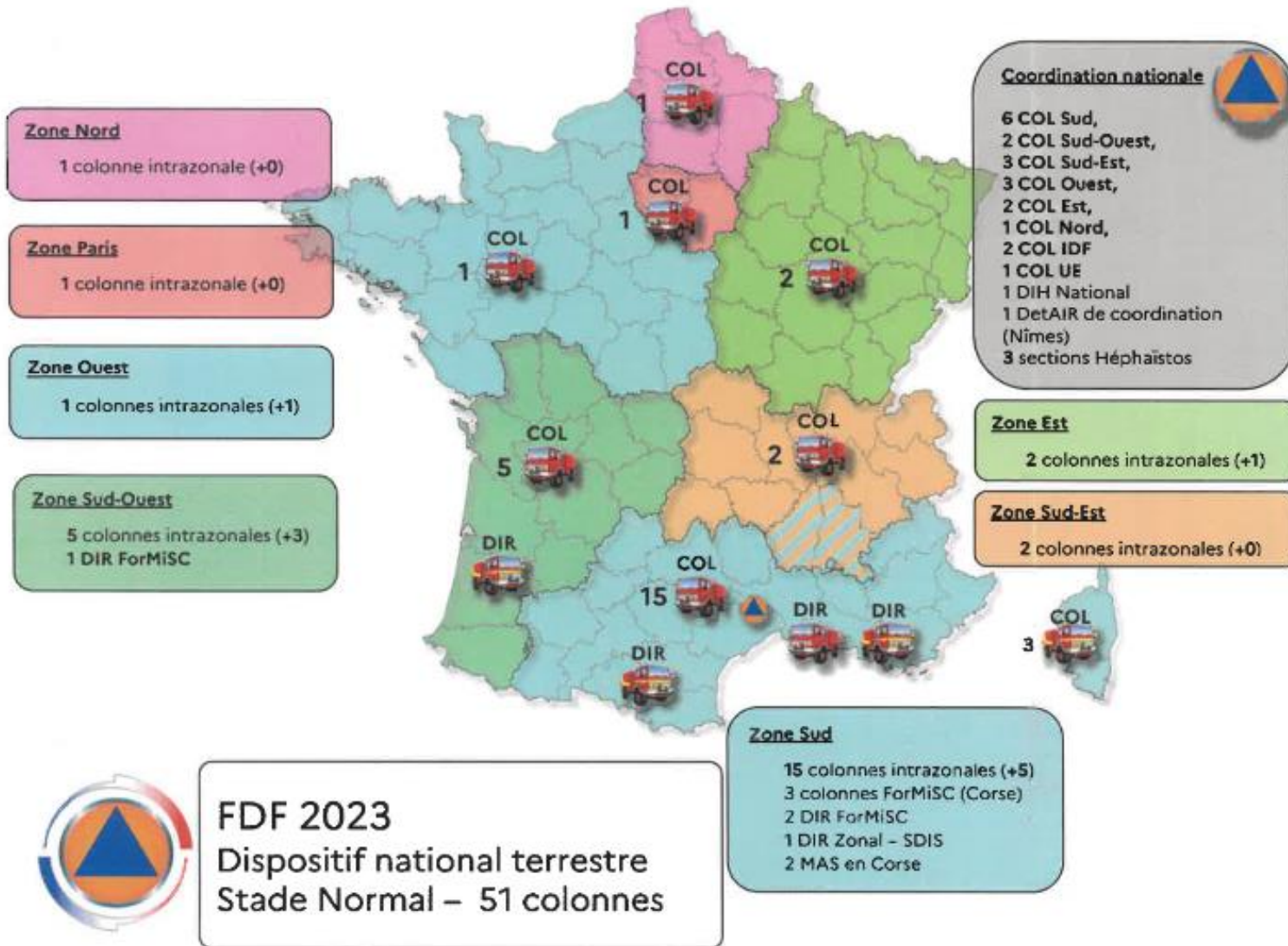
LE GALFF

Groupe Alimentation Feux de Forêts Forest Fire Water Supply Group

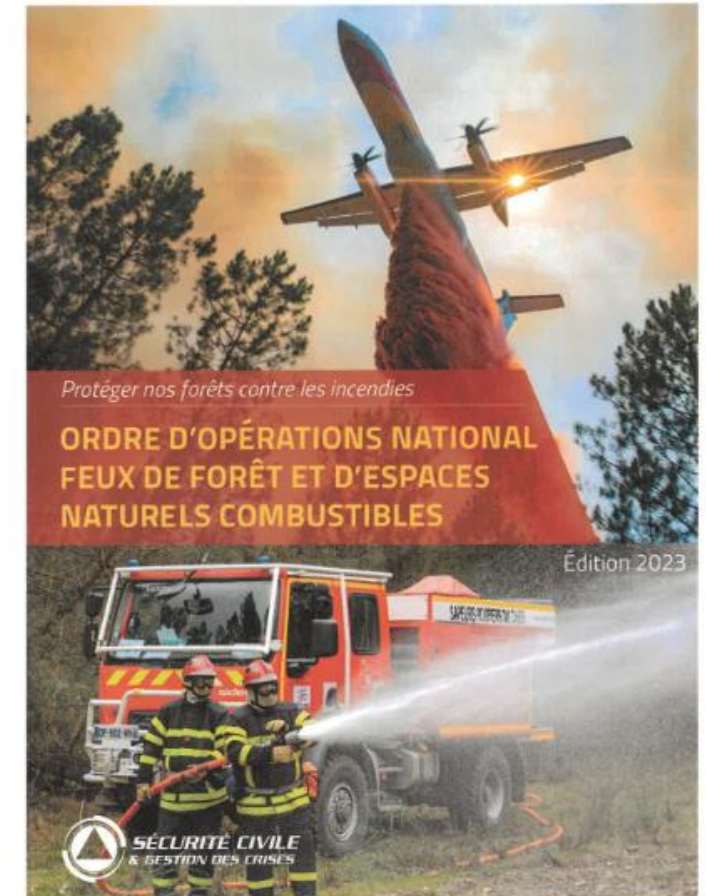
Features :

- 1 VLHR
- CCGC (varies according to SDIS)
- Specific cradles (varies according to SDIS)

REINFORCEMENT COLUMNS



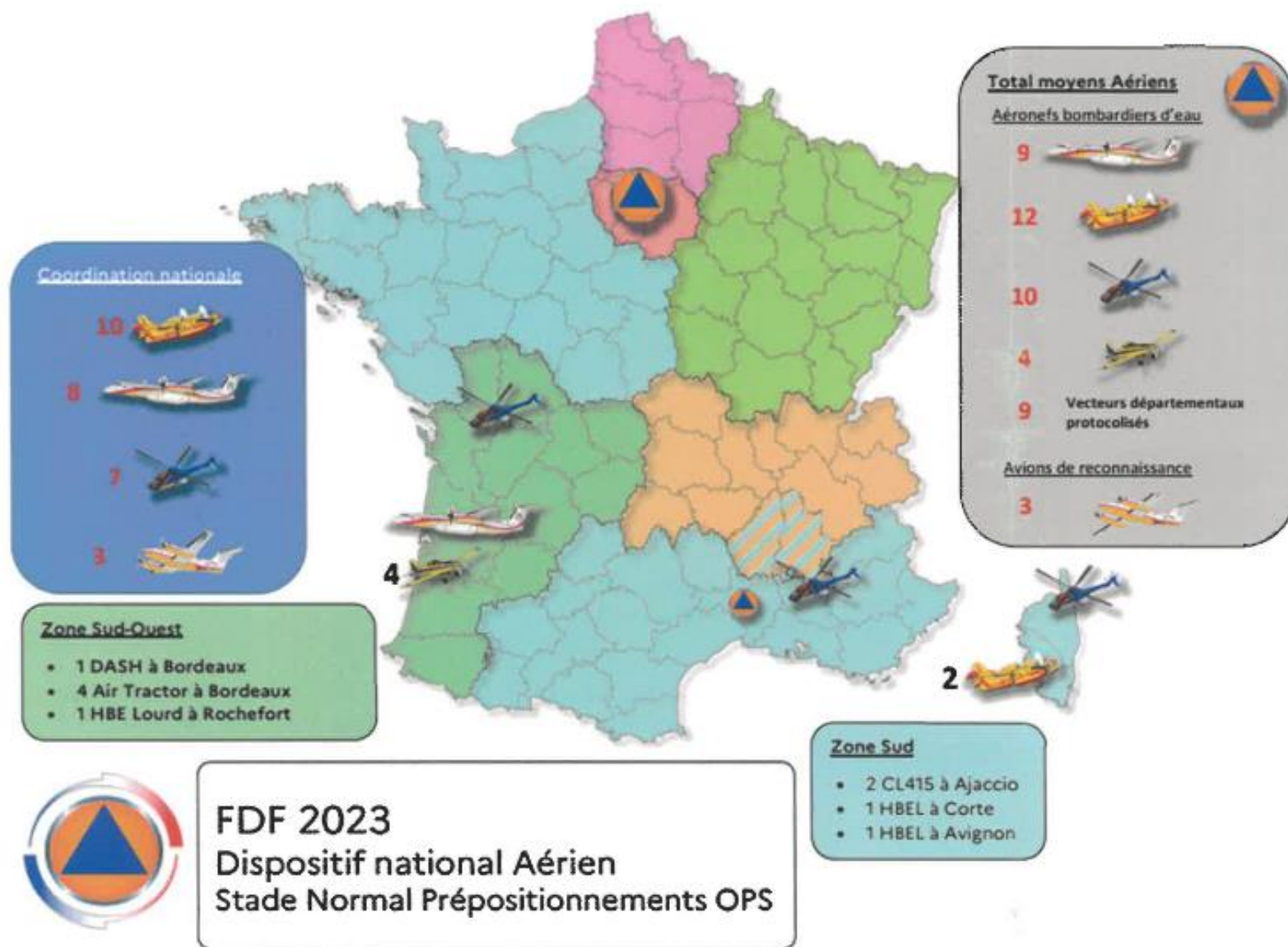
MINISTÈRE
DE L'INTÉRIEUR
ET DES OUTRE-MER
*Liberté
Égalité
Fraternité*



AIR MEANS



THE FLEET 2023



3 BEECH 200

IDENTIFIER

Bengale Investigation or Icare

F-ZBMB



CC-ÉLITE CIVILE



97

« Bengale 96, 97 & 98 »

Liaison aircraft used to :

COORDINATION – INVESTIGATION – TRANSPORT

Equipped with an optronic ball with FLIR system

3 BEECH 200



12 CL415



- Direct attack by noria
- GAAR in coastal areas & in isolated ABE
- Indirect attack
- Installation of delaying support line (exceptional)

FEATURES CL415



IDENTIFIER : PELICAN + N°
(in noria : Pélican leader)

The CL-415 is a twin-engine turboprop which is the evolution of the CL-215

Drop mass : 6.123 kg maximum

Maximum cruising speed : 340 km /h
either 6 km / mn

Scooping time : 12 secondes

8 + 1 DASH 8



- GAAR
- Indirect attack
- Direct attack on retardant
- Installation of delaying support line

8 + 1 DASH 8



FEATURES DASH8

IDENTIFIER : Milan 73, 74, 75, 76, 77, 78, 79 et 80

- Double release door system, controlled by computer.
- Possibility of jettisoning either a quarter, half or the entire tank and adjusting the desired retardant coverage on the ground (from 0.3 l/m² to 3 l/m²), over a length chosen by the pilot between 50 and 250 m and approximately 15 m wide.
- Drops at a height between 30 and 45m and at a speed of 130 Kt.

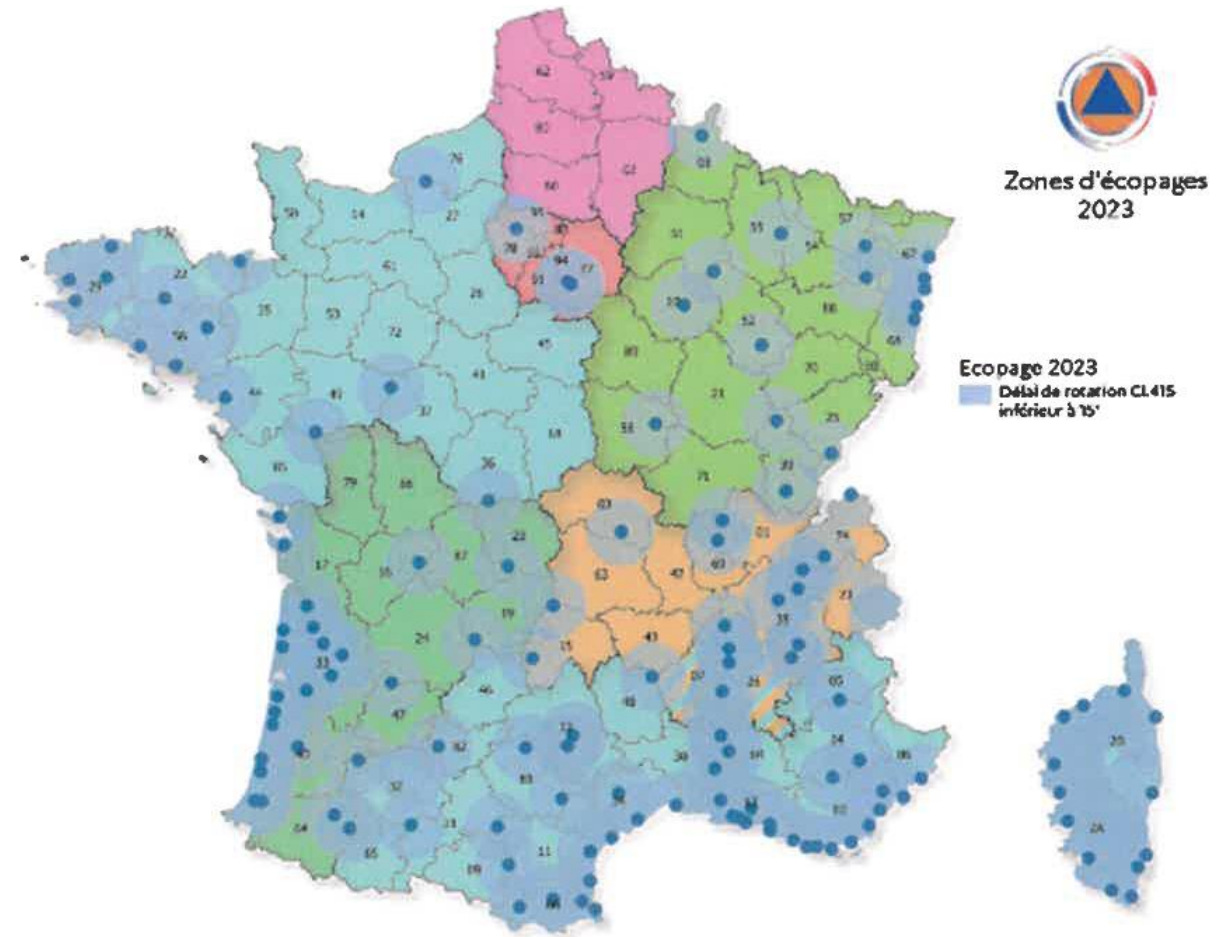
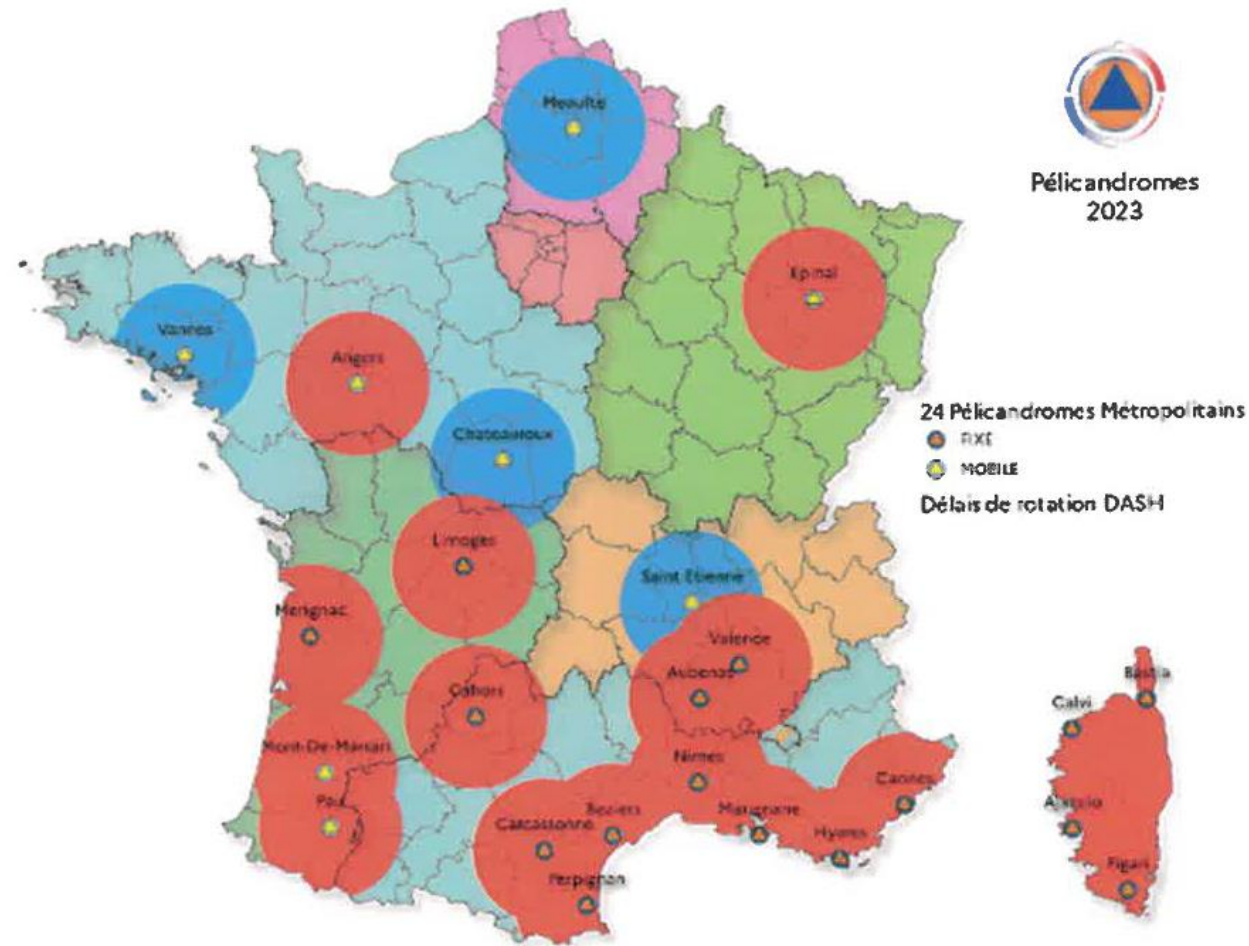
Drop mass : 10 000 litres

Filling in ground point in 5'40 with 2 mouths

Maximum traversable distance: 2522 km

Maximum cruising speed: 667 km/h / 11 km per minute

LES PELICANDROMES & ZONES D'ECOPAGES



MISSION OF GAAr

Objective: be at all fire starts in less than 10 minutes



**Radio contact with the CNCASC on “Infra AIR-Ground”
COZ concerned listening**

In case of fire detection: info CNCASC then COZ then CODIS

CNCASC transmits the entry authorization to the pilot.

However, if despite following the aforementioned procedure, no contact could be established with the relevant CODIS or COZ, and in the absence of on-site firefighting means, the crew may opt for a 'tactical dropping opportunity' if they perceive an imminent danger or a particularly unfavorable development of the incident requiring immediate action considering the stakes involved.

This commitment is then undertaken under the full responsibility of the crew, with neither the CODIS nor the COZ being informed of GAAr's intervention.

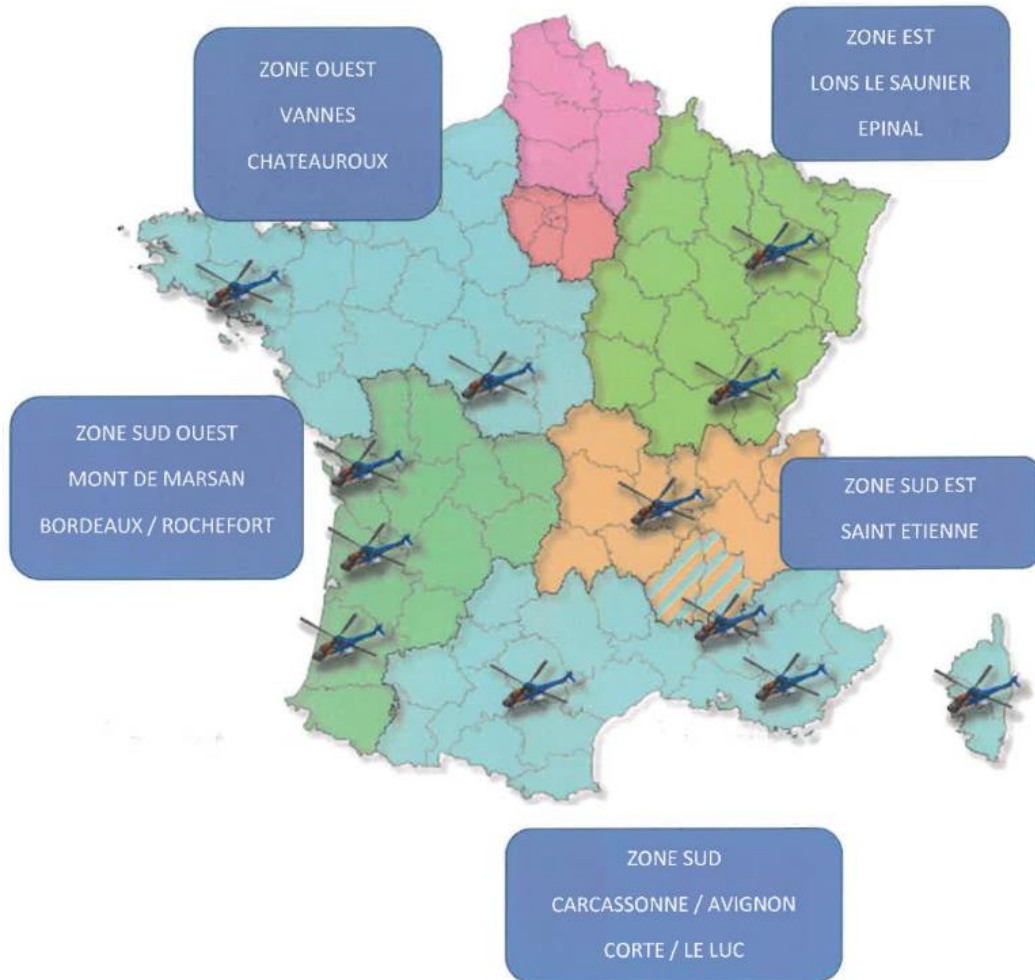
As soon as possible, the crew reports the completed drop to the CNCASC, which disseminates the information to the COZ.

NATIONAL HBE



- Participate in the field network by pre-positioning in a risk sector
- Carry out drops on a fire starting point or an established fire independently or in addition to ABEs
- Carry out personnel or equipment transport missions

NATIONAL HBE



**6 Heavy Water Bomber Helicopters (HBEL)
3.5 tonnes**



4 Water Bomber Helicopters (HBE): 1 tonne



SUPER-PUMA



Thank you for your attention



ENTENTE-VALABRE
ÉTABLISSEMENT PUBLIC

Centre Francis Arrighi - Domaine de Valabre - RD7 - 13120 GARDANNE
Tél. : +33 (0)4 42 60 86 50 - Fax : +33 (0)4 42 60 86 51 - - www.entente-valabre.com