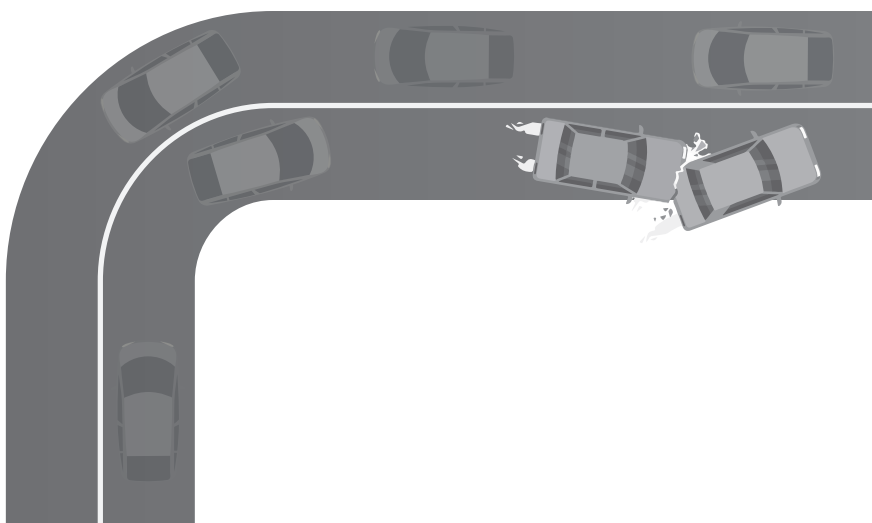
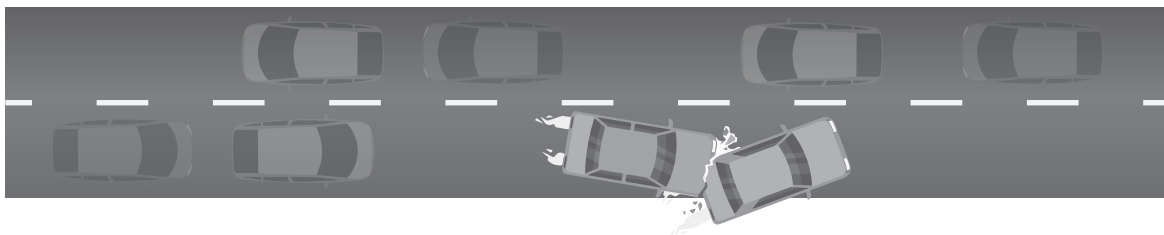
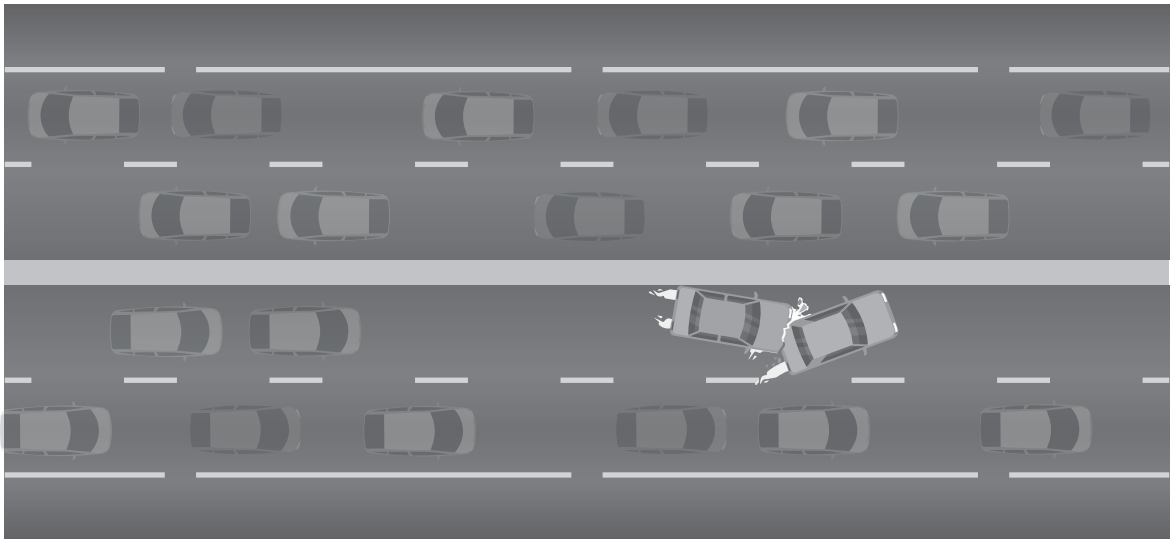
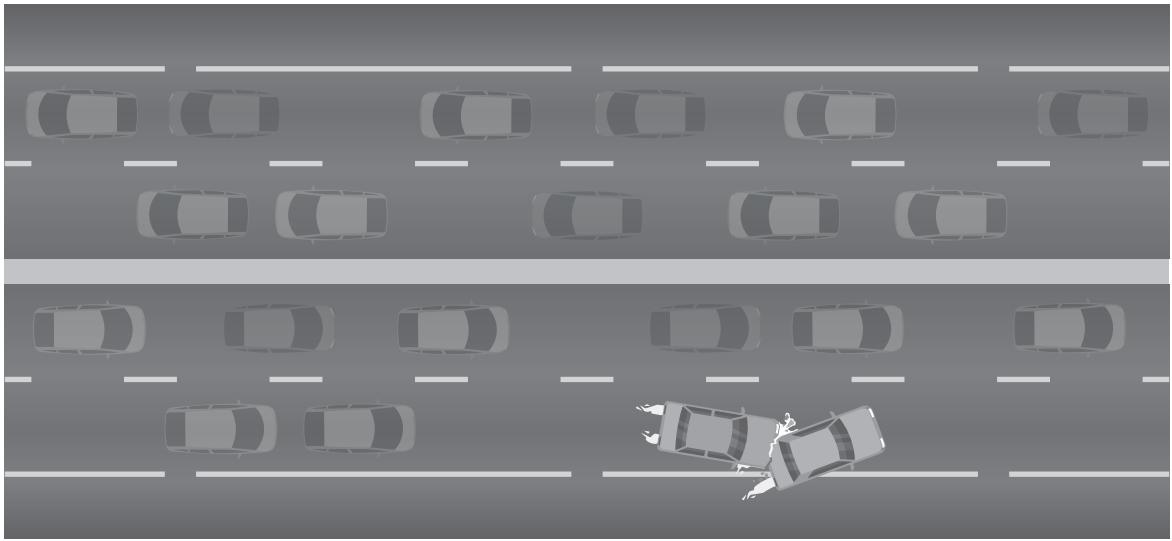


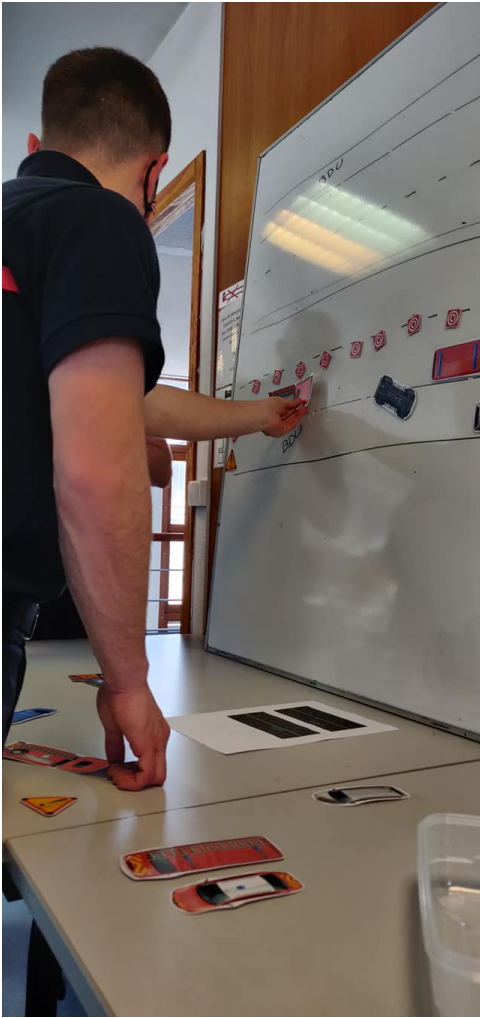
Quel est pour vous, le placement idéal du balisage et des engins pour intervenir en sécurité ?
Pour chaque situation d'accident, schématisez vos pensées au tableau.





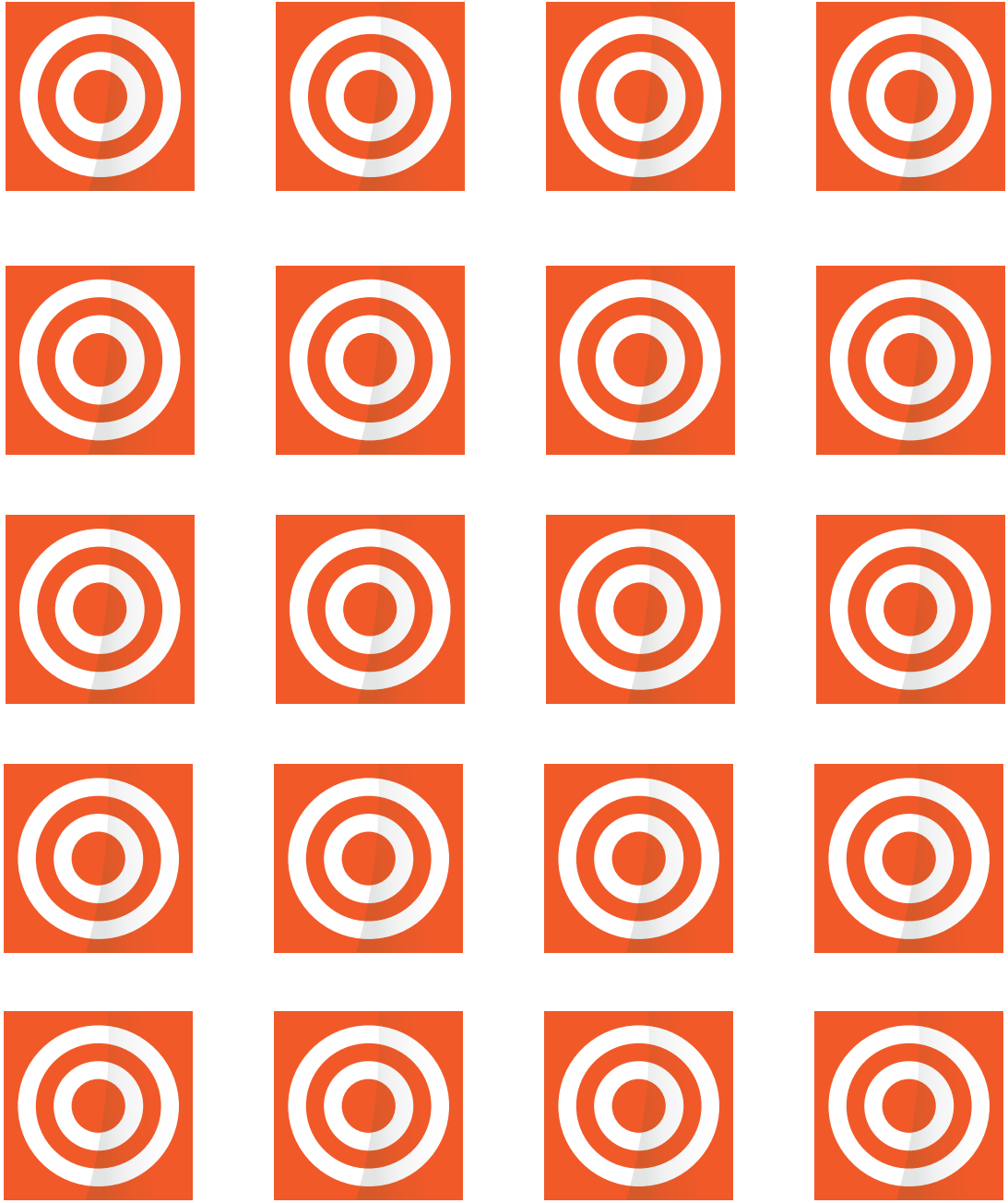
Kit SIVOC

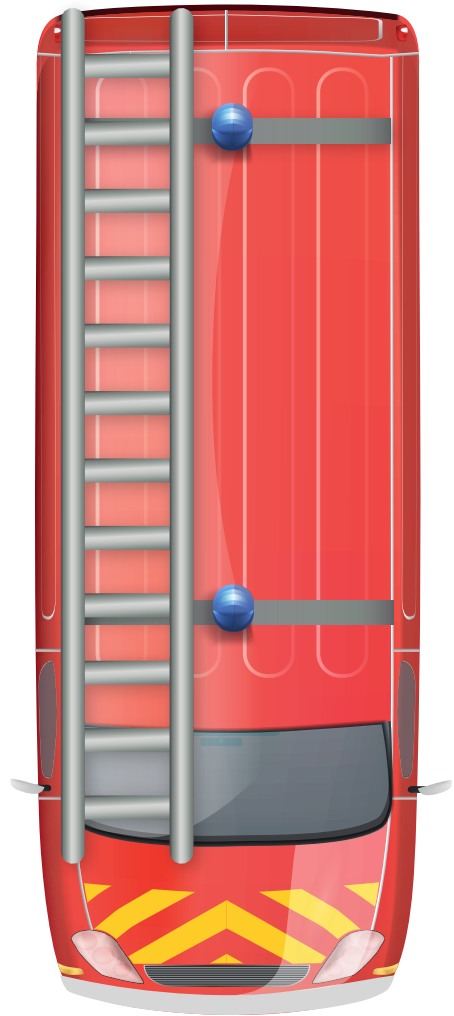
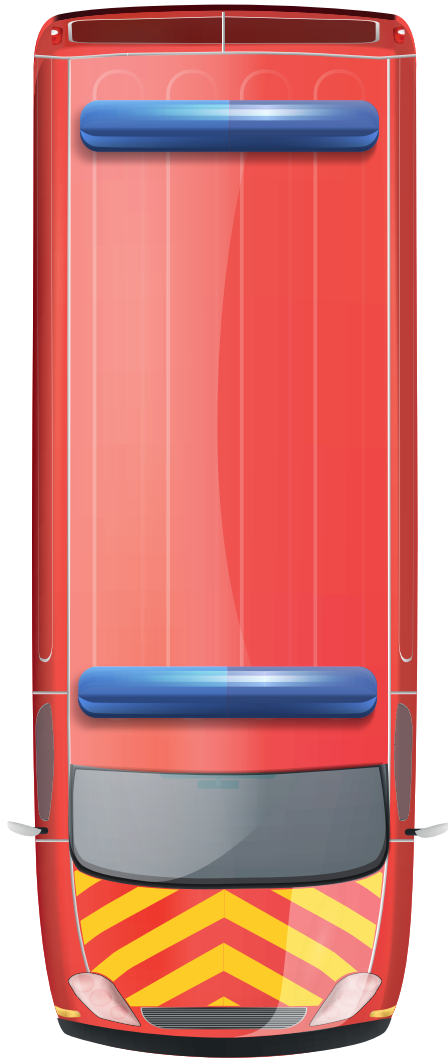
EXERCICE

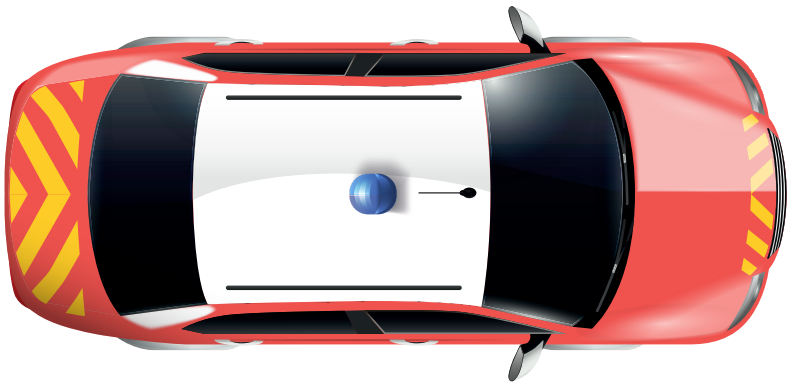
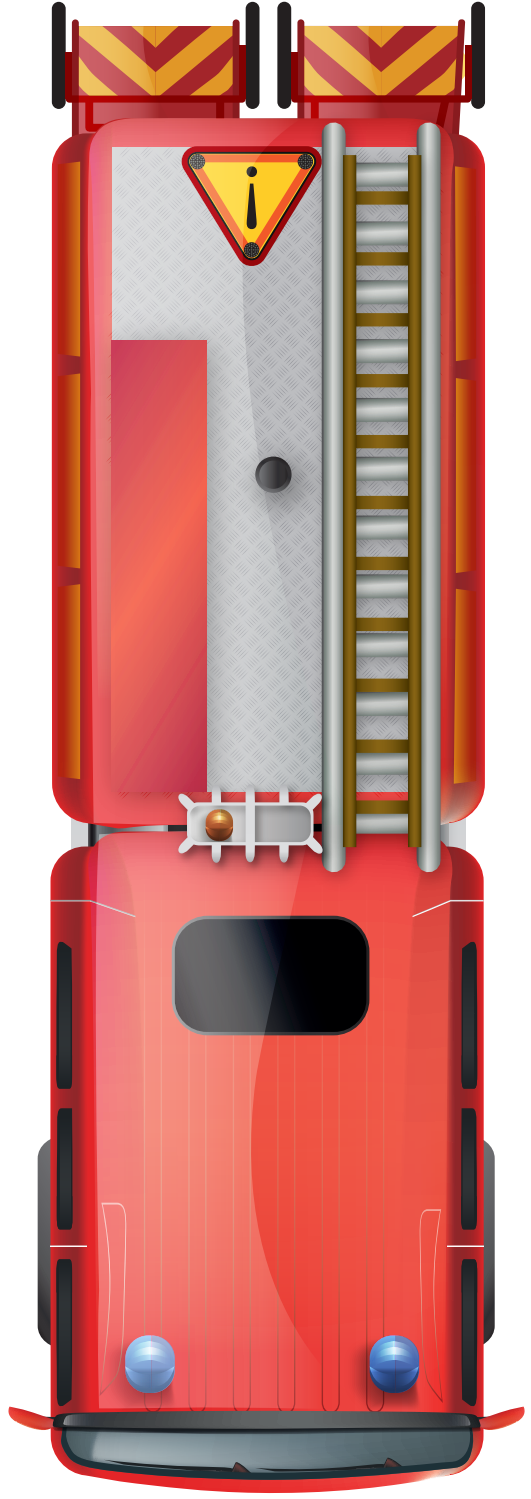
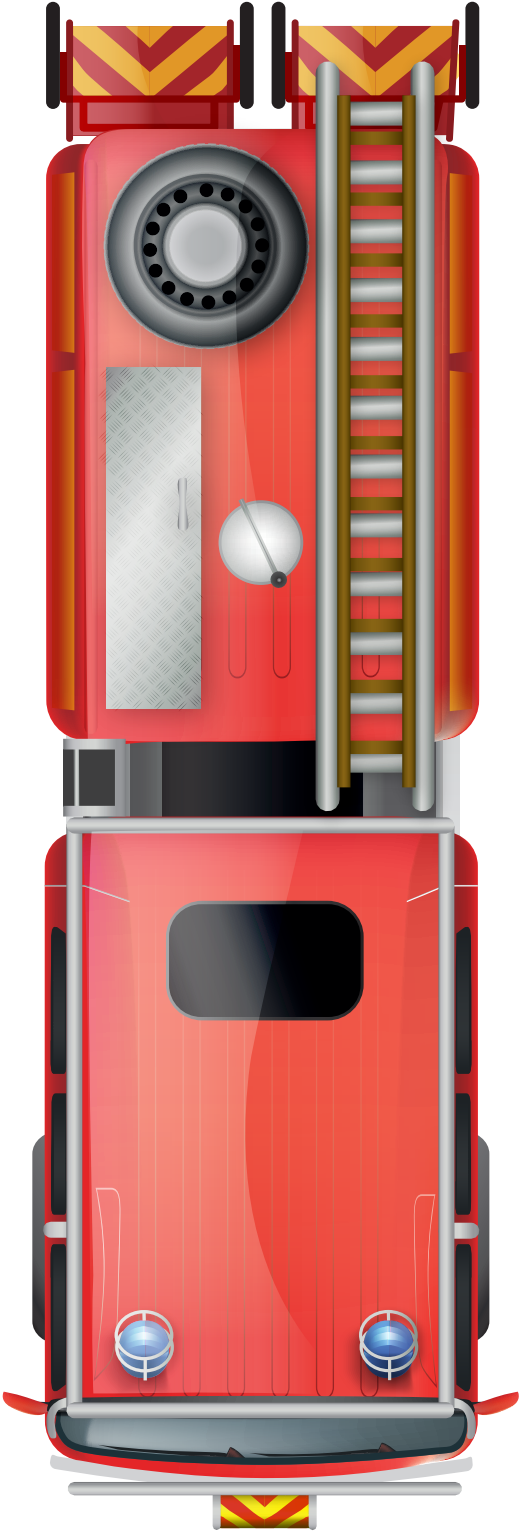


Kit SIVOC

20 cônes
2 triangles de présignalisation
1 bâton lumineux
3 panneaux de zone <i>(sécurité, technique et stationnement)</i>
1 FPTSR
1 CCR
1 VSAV
1 VTU
1 VL CG
1 SMUR
1 VL de Gendarmerie
1 VL accidentée sur ses 4 roues
1 VL accidentée sur le toit







**ZONE DE
STATIONNEMENT**



**ZONE
TECHNIQUE**



**ZONE DE
SÉCURITÉ**

